

The Stitches Village



The Stitches' Voice

The Digital Newsletter of The Stitches' Village

VOL 6 ISSUE 12 – December 2014

Happy Holidays! Our community continues to grow and regain members who are finding their way to the new social area. We get new stitichers all the time who have just discovered us, also. It is always a good thing to see the projects that our members share and to visit with them in chat and the forum.

Did you know that there is a video chat option with the new chat module? This is when you are in private chat boxes and is only available if your browser supports the technology. The last time I checked, both Chrome and Firefox allow for this function. It is an excellent way to demonstrate a stitch or show your Village friends the antics of your pet. Of course, there is the text chat option, but for those who are interested, the video is available.

As we move toward the start of a new year, I hope that you will feel free to share any "wish list" items that you would like to see in the Village. Don't be shy about starting a stitch along or other activity in the Forum or in a Group.

May all your stitching be merry and bright!

Patty Hurwitz
The Stitches' Village
Email: patty@stitchersvillage.com
Site: stitchersvillage.com

Please shop these needlework stores for your stitching supplies. Click on the logo to visit any of the shops.



Homestead Needle Arts



SALTY YARNS

A Stitches Paradise
8th Street & Boardwalk
Ocean City, MD 21842



Picture This Plus

Picture This Plus
212 N. Broadway St
Abilene, KS 67410
785-263-9930 866-314-4343
info@picturethisplus.com



We have a new designer sponsor – Thistledown Yarns. Be sure to visit her web site thistledownyarn.com

You will notice there is a Designer New Release slideshow which appears on the activity page of the community. Some of these have the text “Click for more information”. These designers are sponsors of TSV. Please support the shops and designers of TSV as they help to make our Village possible.

December Birthday Drawing

The December birthday drawing winner is: Lisa B. will receive “Red Velvet Cake” chart and threads from Glendon Place.

Current Stitching Competitions

The deadline is December 15, 2014 for the “Gingerbread House” contest.

The Deadline is January 31, 2015 for the “Heart of the Village” contest.

Details for entering contests can be found on the main village site by clicking on the “Activities” menu option which will have a drop down list of options. Choose “Member Contest” to see the current contest articles with information for them.

Please note that the specials shown below are limited to the shop listed in the box which displays the special. Any questions should be directed to the shop

Rainbow Stitchery
Formerly Laurel's Stitchery

25% off all charts and kits

[CLICK HERE TO SHOP](#)

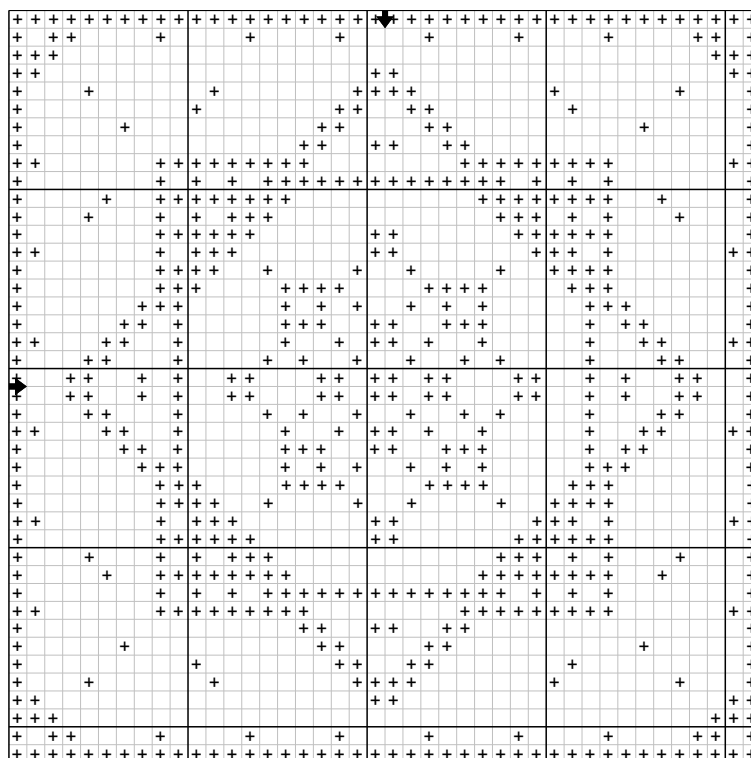
The Stitches' Village 12 Days of Christmas

With all the changes and attention necessary to make them happen, I have chosen to make this year's 12 Days of Christmas as simple as possible. The prizes are the best ever, though, so I hope that you will enter the drawings and I wish you luck! To enter the drawings for the prizes, you must send a separate email each day to: enter@stitchersvillage.com The subject of each day's email must be the corresponding day. Example: 1st Day of Christmas Below is a listing of the prize packages. Please visit the 12 Days article on the main site for details [CLICK HERE](#)

- ◇ Day 1 Ornament Stitching Package
- ◇ Day 2 Just Another Button Company Package
- ◇ Day 3 Praiseworthy Stitches Package
- ◇ Day 4 Needlepoint/Counted Canvas Package
- ◇ Day 5 Glendon Place Package
- ◇ Day 6 Blackbird Designs Package
- ◇ Day 7 Little House Needleworks Package
- ◇ Day 8 Mill Hill Package
- ◇ Day 9 Lizzie Kate Package
- ◇ Day 10 Rosewood Manor Package
- ◇ Day 11 11 Designers Package
- ◇ Day 12 Grand Prize Package

All prizes supplied solely by The Stitches' Village through purchases made.

Below is the 2014 "Squared" Ornament chart from TSV





stitchersvillage.com
an online global needlework community

The Stitches' Village Calendar December 2014

*Support the shops of TSV
Homestead Needlearts, Picture This Plus, Rainbow Stitchery,
Salty Yarns, Stitches Workshop*

Sun	Mon	Tue	Wed	Thu	Fri	Sat
	1 <i>1st Day of Christmas</i>	2 <i>2nd Day of Christmas</i>	3 <i>3rd Day of Christmas</i>	4 <i>4th Day of Christmas</i>	5 <i>5th Day of Christmas</i>	6 <i>6th Day of Christmas</i>
7 <i>7th Day of Christmas</i>	8 <i>8th Day of Christmas</i>	9 <i>9th Day of Christmas</i>	10 <i>10th Day of Christmas</i>	11 <i>11th Day of Christmas</i>	12 <i>12th Day of Christmas</i>	13 <i>Bingo</i>
14	15	16	17	18	19	20
21	22	23	24	25	26	27
28	29	30	31			

Check the site's main Menu under "Activities" for Fabric Orphanage

Bingo games are in the chat module at 7 p.m. Central Time see Forum "Events" for details to play