

The Stitchers' Voice



The chart for these red, white, and blue flowers can be found on page 4

*Red, White, and Blue
Stitch Along
In the Social Area*

Color Challenge Result

Bingo Game Changes



ON THE COVER

See page 4 for the chart
of these flowers and join
a stitch along in the
social area

Summer has been beautiful here in the Heartland! I hope all Villagers are enjoying similar weather wherever you may be! I know that the heat will arrive at any time, but I have been enjoying the mild temperatures so far!

If you have any suggestions of things you would like to see in the Village or events you would like, please let me know. I am always open to ideas and suggestions!

As a reminder, please shop the TSV shops and let them know that you are a TSV member when you do. The shops are the funding for The Stitchers' Village.

Hope to see you in the social area!

Patty Hurwitz

The Stitchers' Village

Email: patty@stitchersvillage.com

Main site: stitchersvillage.com

Social area: stitchersvillage.ning.com

The social module does require a separate sign in from the main site. When you sign up on the main site, it puts you on the newsletter list.

Questions or comments? Email patty@stitchersvillage.com

IN THIS ISSUE

3 Drawing Winners

4 Flower Chart

3 Color Challenge Results

5 TSV Calendar

3 Red, White, and Blue Stitch Along

6 From the Village Square



June Drawing winner

Janet P., IL, is the June drawing winner and she will receive a fabric "orphan" from Picture This Plus

July Birthday Drawing

Tiffany L., WI, will receive this month's Birthday prize - a fabric "orphan" from Picture This Plus

(When members sign up to participate in the social area and give their birth date, they are automatically entered into the drawing during the month of their birthday.)

COLOR CHALLENGE RESULTS

Overall Grand Prize: Terry A

Best Color: Cindi J

Most Creative: Twig P

Best Finishing: Joan M

Most Unique: Jennifer B

RED, WHITE, AND BLUE STITCH ALONG

You are invited to join a stitch along in the social area with a red, white, and blue theme. Fabric, thread, and chart of your choice. Hop over to the Forum in the social area to see what others are stitching. Look under the "Stitch Along" topic. If you need some inspiration, see page 4 for a floral chart that can be finished into a candle mat or coaster!

BINGO NEWS!

The June Bingo winner was Melanie R., who will receive the Rosewood Manor "Winter Quaker" chart along with the fabric and threads.

Bingo now has a new format. Those wishing to participate must email me for their official bingo card numbers. I will send a pdf with your official card. These will be kept on record and you will use the same card each time we play. I have a limited number of "hard" cards I will be sending out to regular players and those who request numbers while the supply lasts. The numbers will be called as in a regular bingo game and we will play different winning configurations each time. This will eliminate the need to email words each time. Once you have contacted me and received your card, just come to bingo at the time announced and play! Prizes will be announced at the time of game posting in the events in the social area. You will surely find this much more fun and exciting as it will make it easier to have several winners from different games like "four corners", "x", and full card! Email me for your card today (patty@stitchersvillage.com). The next game is July 13!!



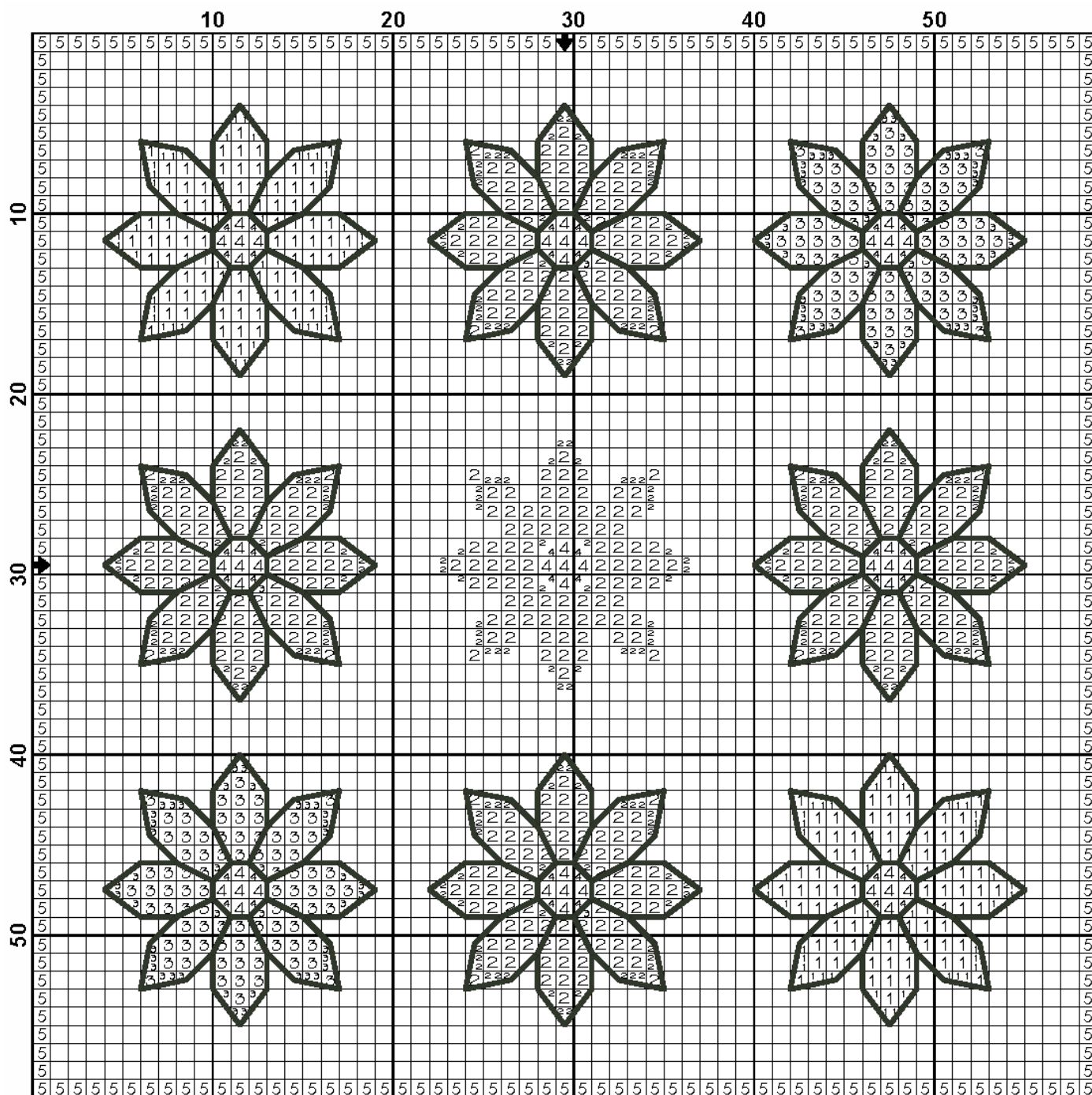
The Stitchers' Village Red, White, and Blue Stitch Along



You are invited to stitch along in a “Red, White, and Blue” stitch along. The place to post your pictures and visit with fellow stitchers is the Forum in the social area (stitchersvillage.ning.com). Below is a flower chart for you to use if you do not have a design on hand. This can be done as a candle mat, coaster, or whatever you choose! Please share your stitching in the social area forum! As always, your fellow villagers are happy to see what you are stitching and love to stitch along with great projects and great themes.

I included the flower in the center without the backstitching to better illustrate the design. Enjoy!

Copyright 2013 - Stitchers' Village Designs





The Stitchers' Village Calendar

July 2013

Sun	Mon	Tue	Wed	Thu	Fri	Sat
	1	2	3	4	5	6
7	8	9	10	11	12	13 <i>BINGO in Chat</i>
14	15	16	17	18	19	20 <i>Fabric Orphan Adoption</i>
21	22	23	24	25	26	27
28	29	30	31			

GAMES are varied and you will want to read in the Events listing in the social area to see if there is a corresponding topic in the Forum to give instructions for the game being played

HOSTED CHAT details under Events on the social area.

Be sure you check the time which is listed Central Time to convert for your time zone

**For the latest releases and new supplies -
Visit the shops of The Stitchers' Village
Along with the boutiques, studios, and wholesalers**

*Please visit these shops when looking for your stitching supplies
and mention that you are a member of TSV!*



Homestead Needle Arts

www.homesteadneedlearts.com



www.laurelsstitchery.com



Picture This Plus

Picture This Plus
212 N. Broadway St
Abilene, KS 67410
785-263-9930 866-314-4343
info@picturethisplus.com

www.picturethisplus.com



SALTY YARNS

A Stitchers Paradise
8th Street & Boardwalk
Ocean City, MD 21842

www.saltyyarns.com



www.stitchersworkshop.com