

The Stitchers' Voice

*A monthly newsletter for the website:
stitchersvillage.com*

April 2022

Volume 14, Issue 4



Through all seasons and in all weather, your needlework village is online! Keep your friends there up-to-date! stitchersvillage.com/village



The April newsletter will feature the first in a four part series of a “Summer Sampler” design. The April through July newsletters are actually being created together after a hiatus due to a much needed break. I have been stitching and continue to work on the “Magic Meadow” sampler which is a vintage WIP. I, of course, have also started the Nora Corbett letters for my three youngest granddaughters: N-R-C.

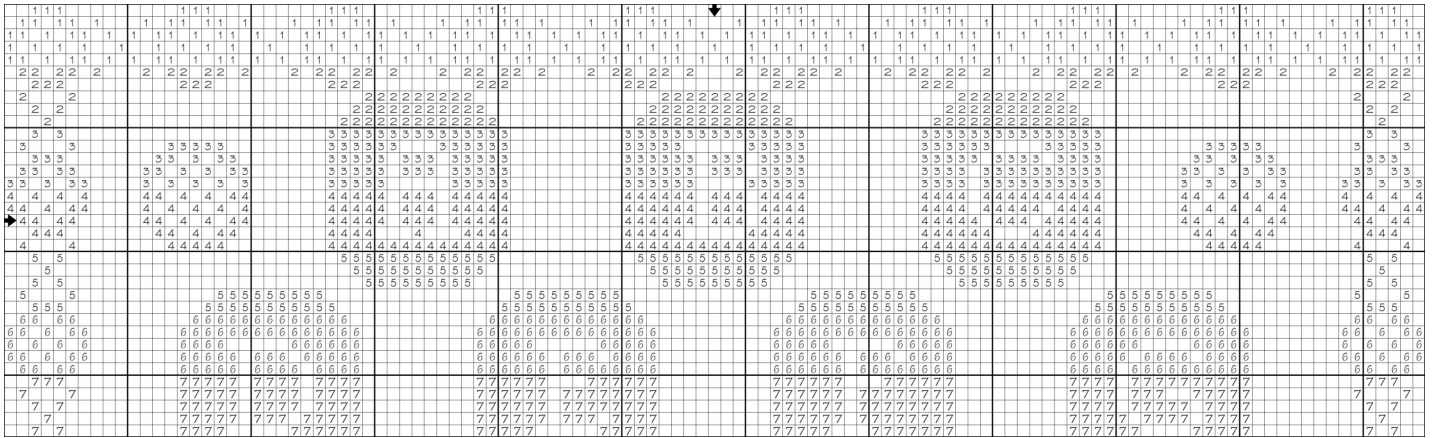
I can not count the times I have given myself a pep talk and sat in front of my computer trying to put together these newsletters. At my stitching group this Spring, one of my co-stitchers had a spool of Anchor floss. I was intrigued as we have all had issues with storing threads. Sulky has a line of cross stitch thread on spools, but it is one ply the thickness of two strands and that is wonderful, but not for all fabric counts. So, off to my local hobby store to gather some samples to try. After playing around with the threads, I conclude that YES! I like them. While they may be a bit bulky if you are working on a project with a lot of colors, the fact that they do not tangle as skeins are likely to do makes them worthy of the investment. I use shallow plastic storage boxes for my current stitching projects by my main stitching chair. The standing spools with the numbers showing make sense to me. I know there are some conversion charts out there - maybe TSV will work on updating that particular one!!

Be well! Happy Stitching! Patty

Questions or comments may be directed to: pattytsv@gmail.com

Summer Stitch 2022

PART 1



As with most of the projects offered in the newsletter, you are encouraged to choose colors for thread and fabric that are most appealing to your personal taste. I will offer the suggested colors that were part of the concept for the design. I imagine a rainbow like transition of colors repeating through the project. I chose 11 colors, but second, third, and many times guessed options for these! The absolute most difficult thing for me is choosing thread colors on some projects! I can also see this done in one overdyed thread on a coordinating fabric color. I have demonstrated the use of an overdyed stitched in a random pattern rather than straight line stitching to create a watercolor-like result. Use your creativity and post your version in the Village!

There will be 4 parts to this chart with no overlapping lines. Chart is 115w x 138h

Suggested Anchor thread colors:

- | | |
|---------------------------|----------------------|
| 1 - 102 Violet VY DK | 7 - 891 Brass |
| 2 - 119 Thistle DK | 8 - 351 Bark MD DK |
| 3 - 132 Cobalt Blue MD DK | 9 - 316 Tangerine DK |
| 4 - 1066 Teal MD | 0 - 47 Carmine Red |
| 5 - 229 Emerald DK | x - 96 Violet LT |
| 6 - 268 Avocado MD DK | |

