

The Stitchers' Voice

*A monthly newsletter for the website:
stitchersvillage.com*

January 2022

Volume 14, Issue 1



Through all seasons and in all weather, your needlework village is online! Keep your friends there up-to-date! stitchersvillage.com/village



Happy New Year!!

Happy 2022! Each new year brings the promise of new stitching projects! Or, better yet, the inspiration to complete some WIP, right? I am in the mood to complete something! I will take a look through my small WIP projects and see if I have something to fit the parameters for the January SAL/challenge that has begun in the Village. Check the page if you wish to participate! stitchersvillage.com/village

The newsletter has a bit of a new look for 2022. Watch for some new release notices and specials from the shop of TSV. There are no plans for TSV to attend any in-person shows, so inventory needs to be cleared out! See page 3 for the January special.

Be well!

Happy Stitching! Patty

Questions or comments may be directed to: pattytsv@gmail.com



A Stitch Along/Challenge has begun for 2022

There is a page posted in the Village community 12/20/21. Be sure to join in!

stitchersvillage.com/village

Details: In this 2022 SAL/Challenge we will have 3 prompts (words) to choose from. You can choose 1, 2 or all 3. Remember to have fun. The prompts (words) will be posted by the 15th of each month to give everyone a chance to get ideas and supplies together. Also a hint: Each month will always have a choice of the name of the month. This is not a contest and there won't be any prizes. This is to get us stitching and maybe get some of those WIPS completed. Please post all photos within the page itself - "not to the general feed". This keeps things organized.

Our January prompt (word) SAL/Challenge choices are:

1. Stitch something that has the word January in it
2. Stitch something that has snow in it
3. Stitch something that has any shade of "blue" in it

The good news on these SAL/Challenge is your stitched piece doesn't have to be completed to post a pic. If you choose to stitch something with the word January in it and you complete the word January and you post a pic on the page, you are done with the SAL/Challenge. Have Fun!

Did you know that registered members of The Stitches' Village community are welcome to host a stitching exchange, stitch along, challenge, etc? There are options for a page or group for any of these activities. The community is intended to be member driven so that you share your stitching in a way that makes you happy.

The Tiny Modernist has released

"Winter Signs"

Just in time for you to stitch a cold winter project!!



Drawings and Contests

January Birthday Drawing prize goes to: Joyce F., TX

The winner is chosen from registered members of the Community of The Stitches' Village and based on the birthdays for the month. A random selection will be made from all of those with birthdays in the current month.

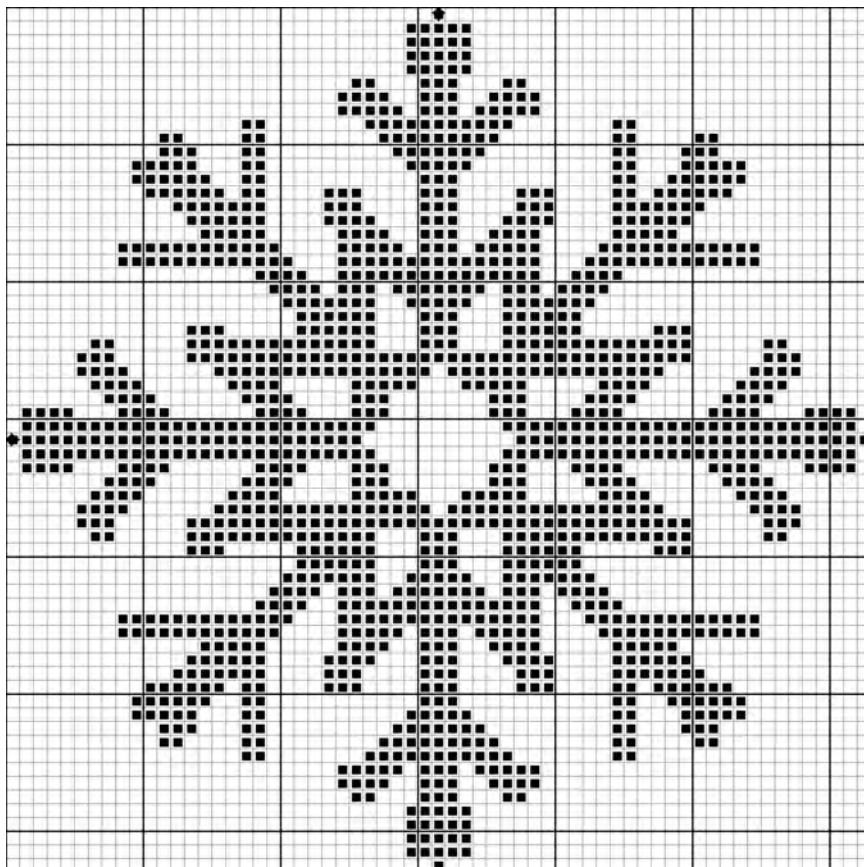
The Survey drawing prize winner of 1/4 fabric goes to: Meryl A., NY

The Stitches' Village shop is featuring Rosewood Manor charts with the following special offer -

buy 3 charts and receive 30% off using discount code Rosewood 30

[See all Rosewood Manor available in the shop of TSV HERE](#)

Stitch This



Snowflake

Fabric and thread choice are completely up to your personal preference! Enjoy!

*Please share your stitching in the social area of the Village.
stitchersvillage.com/village*