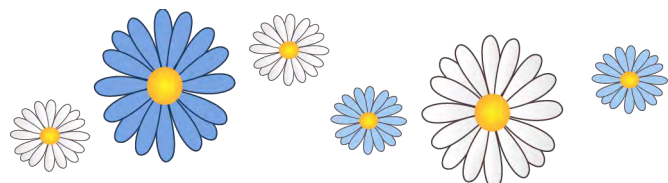


The Stitchers' Voice



This butterfly stencil charted inside



*Stitch Along
In the Social Area*

*Enter The Color
Challenge (page 5)*

*Upcoming Fabric
“Orphan Adoption”
Event Saturday,*

*June 15, 2013
at 9 a.m. Central Time*



ON THE COVER

See page 6 for the chart
of the butterfly stencil
above

Thoughts and prayers are with those who were in the path of the recent severe storms. Fortunately, the weather that has hit the U.S. Midwest has not been nearby.

Market is this month and I look forward to seeing some new releases from designers. I will not be able to attend as a visit to the newest grandchild is scheduled, but I am certain that the emails will be coming in and I will share the photos when they are available.

As a reminder, please shop the TSV shops and let them know that you are a TSV member when you do. The shops are the funding for The Stitchers' Village.

Hope to see you in the social area!

Patty Hurwitz

The Stitchers' Village

Email: patty@stitchersvillage.com

Main site: stitchersvillage.com

Social area: stitchersvillage.ning.com

The social module does require a separate sign in from the main site. When you sign up on the main site, it puts you on the newsletter list.

Questions or comments? Email patty@stitchersvillage.com

IN THIS ISSUE

3 Fabric Orphanage

4 May Shop Specials

5 Color Challenge

6 A Butterfly Chart

7 TSV Calendar

8 From the Village Square

May Drawing winner

Kimberly H., ID, is the May drawing winner and she will receive a chart from Lynn's Prints

June Birthday Drawing

Lori G., TX, will receive this month's Birthday prize.

(When members sign up to participate in the social area and give their birth date, they are automatically entered into the drawing during the month of their birthday.)



Fabric "Orphan Adoption" Event

Saturday, June 15, 2013 at 9 a.m. Central Time

Go to stitchersvillage.com/orphanage.htm for details

Yes, above is a sneak peek at the orphans for this event. There will be 20 available for adoption. This month's drawing will be for a fabric orphan, also. To enter, send an email to enter@stitchersvillage.com with the subject as "June"

MARCH SHOP SPECIALS

Laurel's Stitchery



Bent Creek Mantle Kits

Bent Creek Mantle Kits
25% off in-stock kits

Regular price \$84 each, now \$63 each. Includes complete set of patterns, fabric, floss and embellishments.

Now Through June 10 Only!

[CLICK TO PURCHASE](#)

Stitchers Workshop

**Stitchers Village Members
Will receive 20% off all in-stock
Items from Stitchers' Workshop**

Stitcher's Village members save big at Stitches' Workshop this month! All **in-stock** merchandise is 20% off but you must mention Stitches' Village when you call or choose it in the "How did you hear about us?" drop down menu. The discount will not show on your shopping cart but you will receive a confirmation with the discount shown and any out of stock items mentioned. Come shop with us and save!

20% OFF

Now Through June 10 Only!

[CLICK TO PURCHASE](#)

Note: Shop specials are only applicable in the shop indicated in the header box above the advertised special on this page. If you have any questions regarding the price of an item, please contact the shop directly.

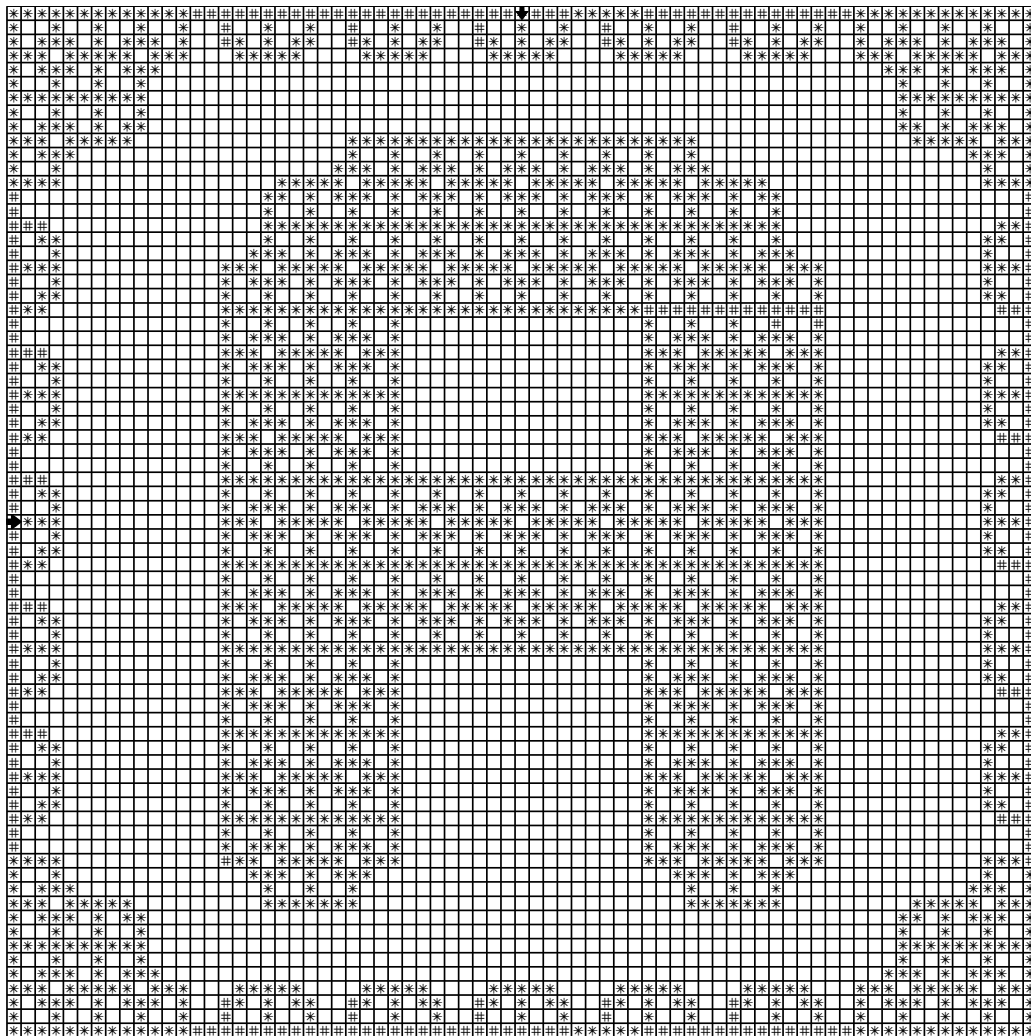


The Stitchers' Village 2013 Color Challenge

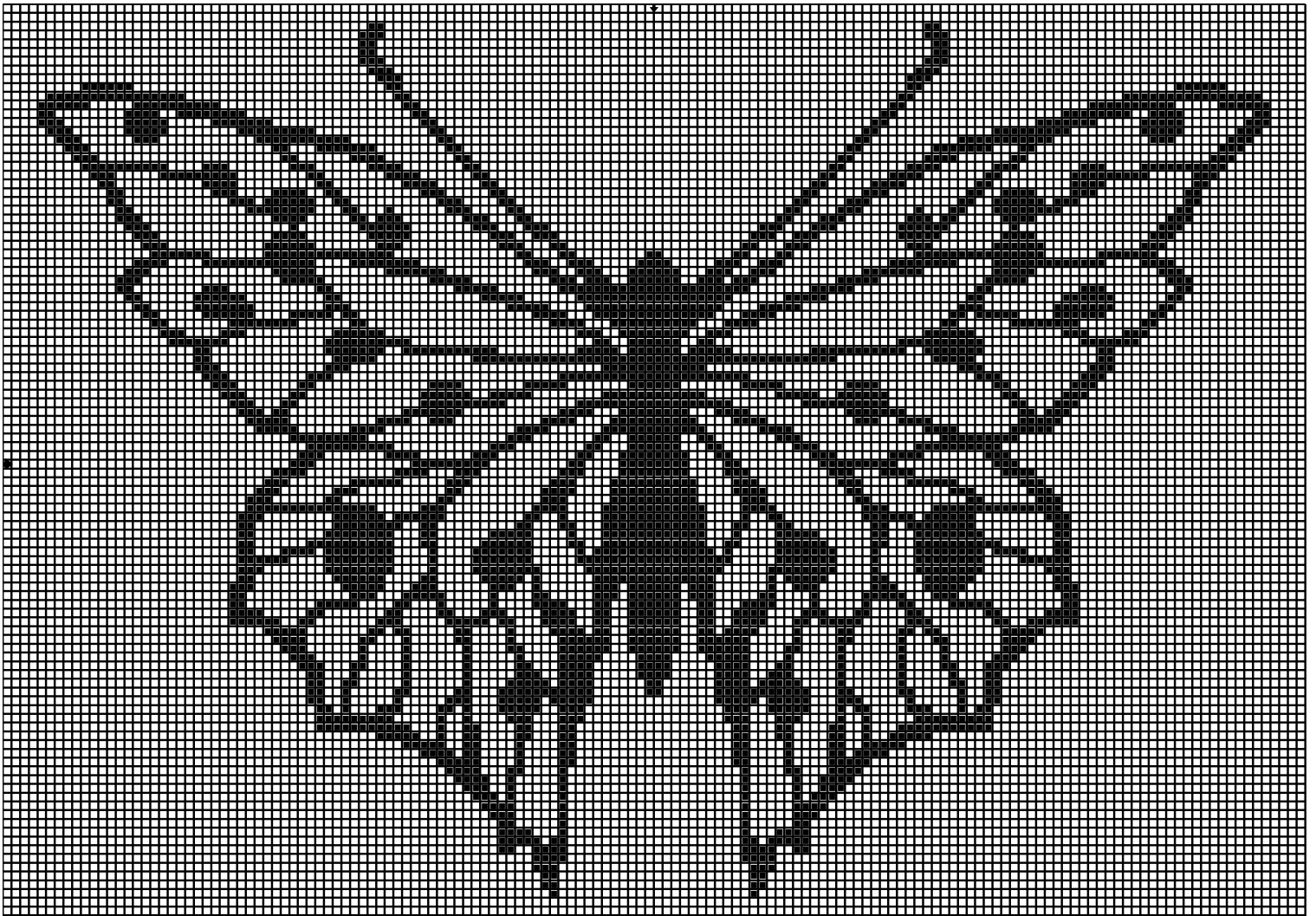
You are invited to stitch the design below using your choice of initial (alphabet in the May newsletter and in the Forum Discussion in the social area). You may stitch this on any fabric color or count with any thread or added embellishments you choose. The idea is to create a lovely unique piece and to enter into the color challenge. Once you have your project stitched, you will post a picture in The Stitchers' Village Forum topic "TSV Contests and Drawings" under the "2013 Color Challenge" discussion.

The contest will begin May 1, 2013 and run through June 30, 2013. At that time, all entries will be entered into a competition to compete for prizes in categories to include: Best Color, Most Creative, and Best Finishing. If you are not a social member, but wish to participate, you may email me your entry at patty@stitchersvillage.com

Copyright 2013 - Stitchers' Village Designs

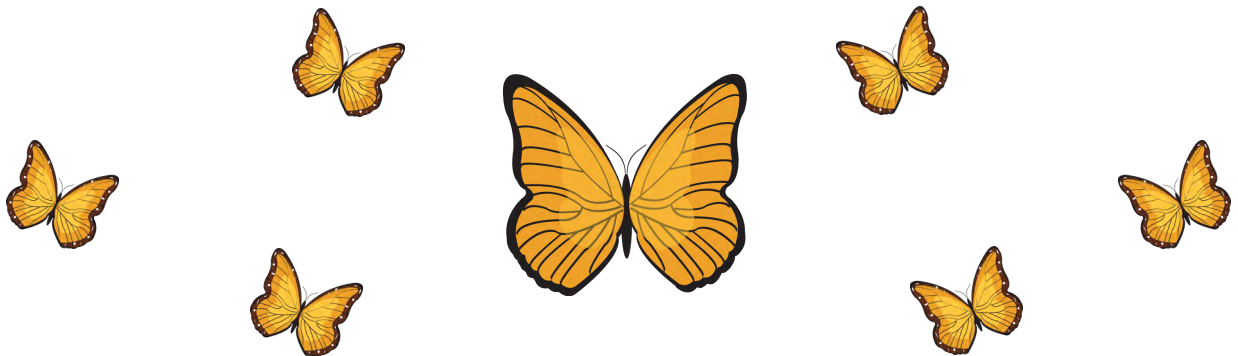


Butterfly



“Butterfly” chart compliments of The Stitchers’ Village

Join in the Social Area activities which include the sharing of photos of your projects!
As of this writing, there are 2004 social members of TSV enjoying the friendship and the encouragement of sister stitchers from around the world!





The Stitches' Village Calendar

June 2013

Sun	Mon	Tue	Wed	Thu	Fri	Sat
						1
2	3	4	5	6	7	8
9	10	11	12	13	14	15 Fabric Orphan Adoption BINGO
16	17	18	19	20	21	22
23	24	25	26	27	28	29
30						

GAMES are varied and you will want to read in the Events listing in the social area to see if there is a corresponding topic in the Forum to give instructions for the game being played

HOSTED CHAT details under Events on the social area.

Be sure you check the time which is listed Central Time to convert for your time zone

**For the latest releases and new supplies -
Visit the shops of The Stitchers' Village
Along with the boutiques, studios, and wholesalers**

*Please visit these shops when looking for your stitching supplies
and mention that you are a member of TSV!*



Homestead Needle Arts

www.homesteadneedlearts.com



www.laurelsstitchery.com



www.picturethisplus.com



www.saltyyarns.com



www.stitchersworkshop.com