



The Stitches' Voice



Volume 10, Issue 12 – December 2018



I have created an activity page which will go live on **December 15** with 5 days of activities and 5 great prizes. I will incorporate the social area into the activity this year. The tree in the center of the Village home page graphic will be the link to the page. stitchersvillage.com The picture above is a clue to the theme for the graphics on the holiday activity page this year. I was in a chalkboard frame of mind. . .

TSV will host some year-long stitching challenges and a "Stitch Study" on symbolism in sampler motifs. Those will all start in January and will be hosted in groups. You can sign up now for two of the challenges. As always, if you want to start something like a stitch along, you may do so in the community. Just start a group and invite your friends.

I hope that everyone has a wonderful time in the upcoming holiday season!!

Happy Stitching! Patty

Questions or comments may be directed to: pattytstv@gmail.com

Shops of TSV

Please shop these needlework stores for your stitching supplies. Click on the logo to visit any of the shops.





Activities



A Color Challenge was held in November with a “Crystal Flower” chart posted. Participants who stitched their color version of the chart and posted a picture were put into a drawing for a set of the Noah’s Ark ornament charts from Plum Street Sampler. The winner was Twig P., AZ.

You are invited to join in either or both of two group activities on The Stitches’ Village which will begin on January 1, 2019. Make your plans now for the One Small Stitch Challenge and/or the One Big Finish Challenge. The One Small Stitch Challenge is to choose 12 small projects and finish one a month during 2019. The One Big Finish Challenge is to choose a big project that you would like to complete in 2019. Each of these challenges are set up as a group in the TSV community stichersvillage.com/village

Quick Tips for the Community

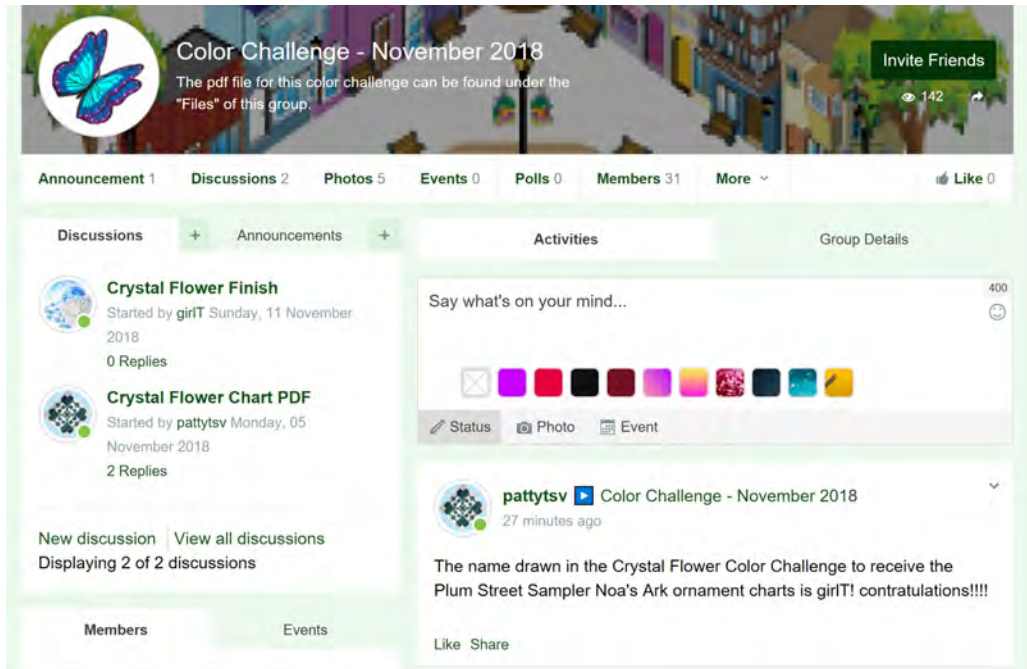
The screenshot shows the 'Groups' section of the website. At the top, there are navigation links: Home, Forum, Profile, Members, Friends, Groups, Photos, Events, and a search icon. Below this is a 'Groups' header with a search bar and a 'Create Group' button. There are tabs for 'All groups', 'My groups', 'My group updates', and 'Pending Invitations'. A dropdown menu shows 'Newest Groups' and 'All Categories'. Two group listings are visible:

- 2019 One Big Finish Challenge**: 7 Members, 0 Discussions, 0 Announcements, 3 Photos, 0 Event, 0 Poll. Created by pattytsv. Public.
- 2019 One Small Stitch Challenge**: 8 Members, 0 Discussions, 0 Announcements, 0 Photos, 0 Event, 0 Poll. Created by pattytsv. Public.

Groups
Groups is where activities can be held such as the upcoming finish challenges for 2019. They may also be created for like minded members to discuss topics and classes may be held there. If you click on “Groups” from the community menu you are taken to a list of current groups. Click on the title of the group you wish to join. If it is public, you will automatically join. Some groups require approval for various reasons. This should be explained in the group description.



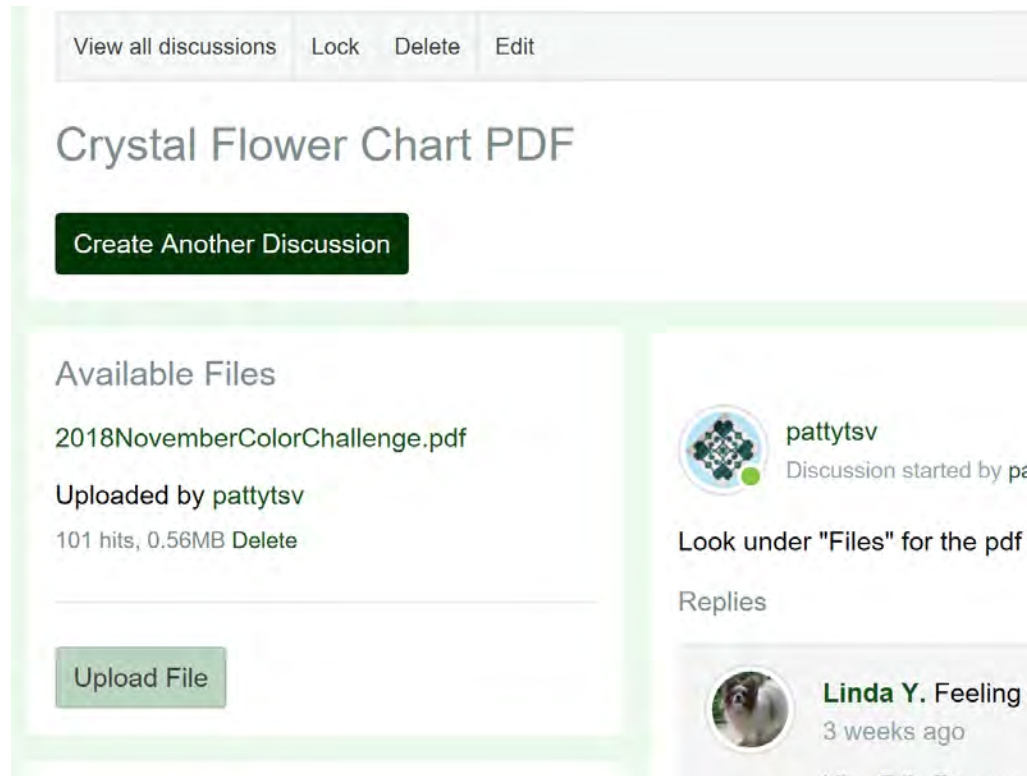
Quick Tips for the Community continued



Groups continued

When you click on the title of the group from the groups home page, you will see the tabs for the Discussions and Announcements on the left and the tabs for the Activity stream and Group Details on the right. All of the posts in the group's discussions show on this main activity stream.

If you click on one of the discussions (example Crystal Flower Chart PDF) you will be taken to a page for that discussion which has a Files area. As shown here, the pdf file with the Crystal Flower chart was uploaded and available for group members to access and download.



This is the format that is used for the Mystery Stitch Bingo activities that are held on TSV, also.



The Stitches' Village Newsletter
Volume 10, Issue 12
December 2018
Page 4

Drawings and Contests

The November drawing winners are Marianne H., VA and Sharon M., NM
who will each receive
a set of the Plum Street Sampler "Noah's Ark" ornaments.

The December drawing will be for "Oaken" from Stitches' Village Designs and will include the
threads, fabric, and Swarovski crystal embellishments.

Entries must be received by 12/31/18 - the winner will be chosen at random from entries

Use the code "oaken" when you submit the form

Enter by filling out the drawing form [HERE](#)

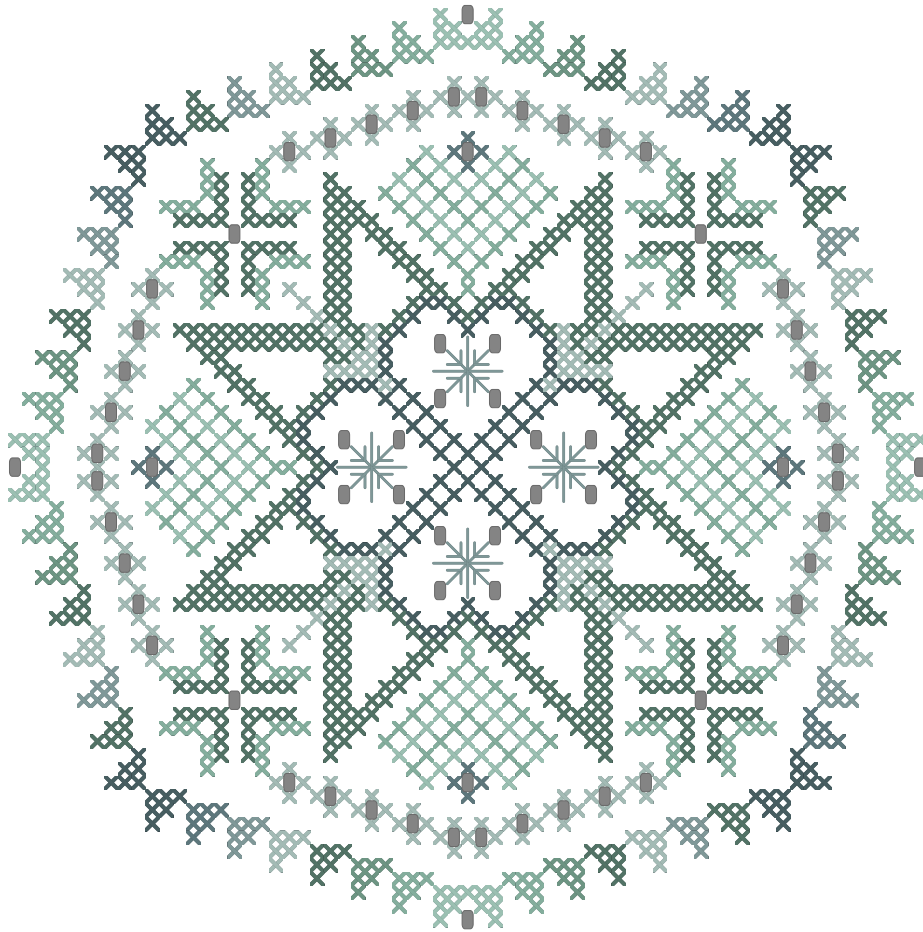
<http://stitchersvillage.com/library/drawing-form>



Stitch This

The following 2 pages are a reprint of an ornament from 2013 provided by Rosewood Manor.

I LOVE SNOW!



*Rosewood Manor
features over 250
lovely cross stitch designs
for your stitching pleasure.
Collect them all!*

*We also feature
quilt patterns,
from purses,
to miniature quilt designs,
which can be adapted to
create larger quilts.
Ask about our Thread Savers
and Greeting Cards Too!*

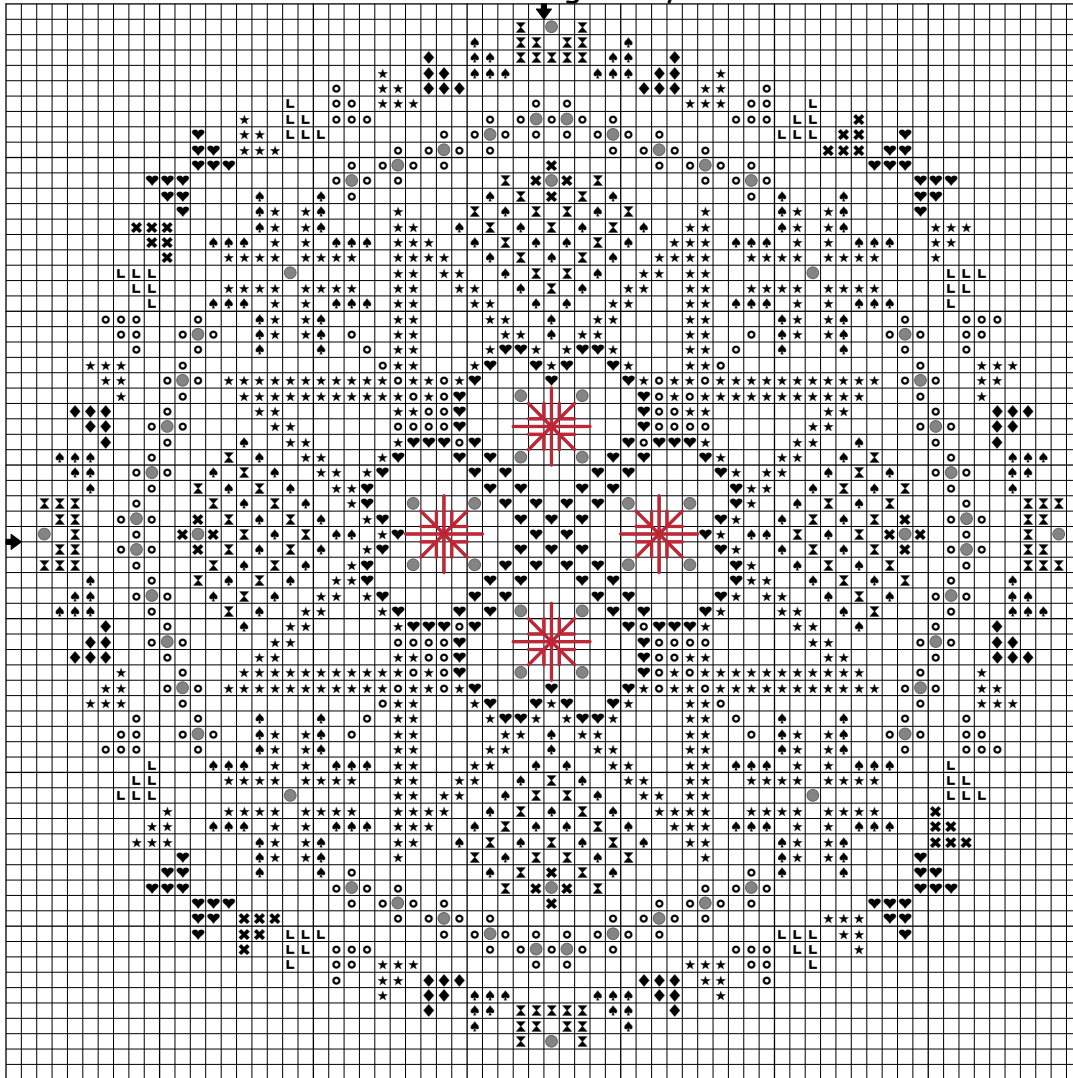
*Ask for Rosewood Manor
charts and patterns at your
local fine needlework shop
and
your favorite local quilt store.*

www.rosewoodxstitch.com

I LOVE SNOW!

Designed by Karen Kluba

ROSEWOOD MANOR



Color Chart

	DMC	ANC
★	501	878
◆	502	877
♠	503	876
♥	924	851
L	926	850
○	927	848
✕	3768	779
⌵	3813	875

Mill Hill Beads

Bead
● 03007

FABRIC:

Zweigart, 28ct Lugana,
Antique White

Long Stitch:(shown in red)
1 strands DMC 926

Add beads using
beading needle and
1 strand DMC 927.

FINISHING INSTRUCTIONS:

Materials needed: Self-adhesive padded mounting board, and hot-glue gun or crafting glue, backing fabric and 1 skein floss for Twisted Cording.

**Measure the stitched piece and add about 1/4" or more, to know the size mounting board needed.

**Cut 2 pieces of mounting board the same size.

**Following manufacturer's instructions, center stitched ornament on one piece of mounting board.

**Repeat on other piece of mounting board for backing fabric.

**With wrong sides together, blind stitch or glue backing to ornament--be sure to add hanger.

**Add cording.

Merry Christmas!!!

Website: www.rosewoodxstitch.com

**COMPLIMENTARY MINI
CHART FOR THE STITCHER'S
VILLAGE

**NOT FOR RESALE

